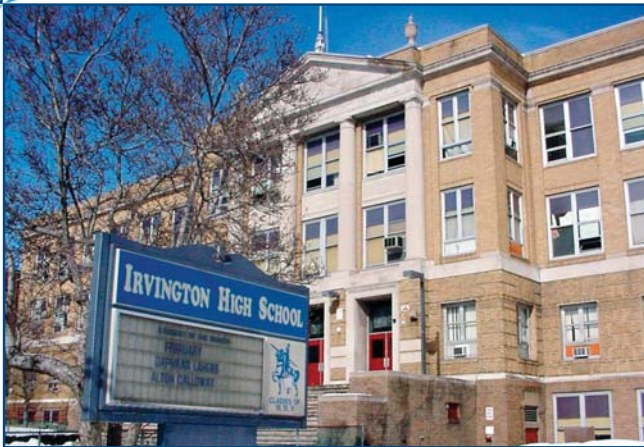


## *KS Engineers, P.C.*



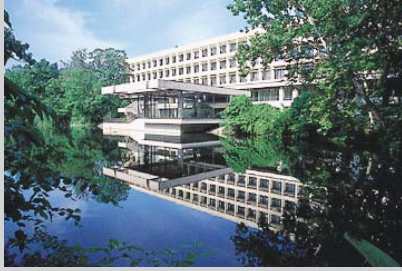
- *Structural Analysis & Design*
  - *Site / Civil Design*
  - *Surveying Services*
  - *Traffic / Transportation Engineering*
  - *Parking Lot Design*
  - *Streetscape Design*
  - *Geotechnical Engineering*
  - *Site Lighting Design*
  - *Construction Inspection*
  - *Construction Management*
  - *Demolition Design & Inspection*
  - *3D Architectural Animation*
  - *Photo-Simulation*
  - *CAD Services*



***KSE***  
Educational Facilities

# KS Engineers, P.C.

Engineers . Surveyors . Construction Managers



*Interior Renovation & Addition of the Science Hall and 65,000 SF Multi-Story Addition for William Patterson University, NJ*

*KS Engineers, P.C. (KSE) is an award-winning, multi-disciplinary M/SBE providing essential engineering services for new construction and renovation projects at colleges, universities and K-12 schools.*

*KSE has designed laboratories, residential facilities, classrooms, athletic facilities, administrative facilities, parking areas, roadways and campus infrastructure. Projects have included new construction, structural assessment, additions and renovations, facade remediation, life and safety improvements, land surveying, site lighting design, grading and drainage design.*

*KSE understands the unique role that each educational facility plays in its community. We work closely with our clients to ensure that specific programmatic requirements are complimented by innovative, efficient and cost effective design.*

*KSE is committed to maximizing the value of every dollar that our clients spend on campus improvement projects. KSE is well versed in the latest 'green' design techniques. Our LEED certified professionals help our clients make the most of their natural and financial resources.*



*Structural Design of Athletic Field at Richard Stockton University, NJ*



*Design Projects  
University of Medicine & Dentistry of New Jersey*



*Kean University Design Projects  
Union, NJ*

- *Education & Research Building, Camden Campus*
- *Design / Build Services for Renovations to the 1<sup>st</sup> and 6<sup>th</sup> Floors of the Medical Education Building for the Robert Wood Johnson Medical School, New Brunswick*

- *Center for Science, Technology & Mathematics Education*
- *New Residence Halls*
- *East Campus Link*
- *'Green' Parking Lot*
- *700 Car Parking Deck, Storage Facility & Road Improvements*

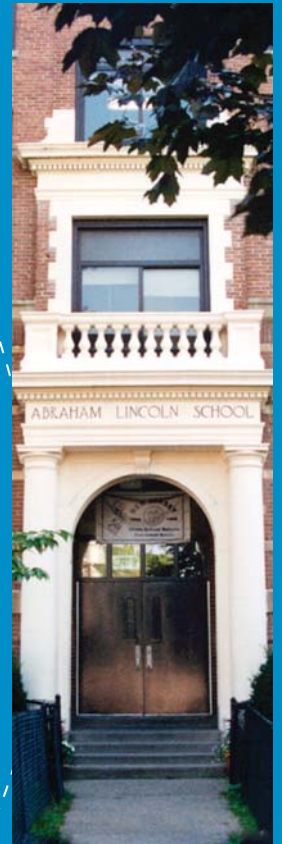
*Facade Rehabilitation  
Mayer Sulzberger Middle School - Philadelphia, PA*



*Boundary and Topographic Survey  
Millville Senior High School - Asbury Park, NJ*



*Site/Civil and Structural Design  
Central Elementary School - Orange, NJ*



*Boundary & Topographic Survey  
Abraham Lincoln School #14 - Elizabeth, NJ*



*Civil Design Services for Renovations  
Penrose Elementary School & Motivation High School  
Philadelphia, PA*



*Site / Civil Engineering  
Conley & Hoppock Schools - Bethlehem Township, NJ*



*Structural Design  
Gloucester City New Elementary / Middle School  
Gloucester City, NJ*

# KS Engineers, P.C.

Engineers . Surveyors . Construction Managers



Foundation design for New Jersey Devils Arena  
Newark Housing Authority



Civil Engineering, Landscape Design, Construction Inspection,  
and Owner's Representative Services for The Navy Yard Town  
Center Infrastructure Improvement Project Philadelphia Industrial  
Development Corporation (PIDC)



Construction Management  
Fulton Street Transit Center - MTA / NYCT

## About Us

At **KS Engineers, P.C. (KSE)**, we understand the unique principles of quality facilities design. As an award winning **MBE/SBE**, we are proud to offer expert engineering, survey and construction management services to colleges, universities, and K-12 schools in New Jersey, New York, and Pennsylvania. Whether the project calls for the design of a new facility or the addition, renovation, or repair to existing structures, **KSE**'s 95 full-time professionals have the skills and experience necessary to address any design challenge.

## Clients / Owners

Bayonne Local Redevelopment Authority  
Bethlehem Township School District  
City of Newark  
Dormitory Authority of the State of New York  
Kean University  
Monmouth County School District  
Mount Olive Township Board of Education  
New York City School Construction Authority  
Newark Housing Authority  
Newark Public Schools  
NJ Schools Construction Corporation  
School District of Philadelphia  
State University of New York  
Stockton College  
Trenton Housing Authority  
Union Chapel Community Development Corporation  
University of Medicine & Dentistry New Jersey  
University of Pennsylvania  
William Paterson University  
Woodbridge Housing Authority

## Front Cover:

Kean University Civil and Structural Design Services, NJ

NJSCC Schools Construction Program  
Irvington High School, NJ

## Corporate Headquarters

494 Broad Street, 4<sup>th</sup> Floor  
Newark, NJ 07102  
T: 973 . 623 . 2999  
F: 973 . 242 . 2955  
[www.kseng.com](http://www.kseng.com)

**KSE**  
New Jersey  
New York  
Pennsylvania